



# LAKIREDDY BALI REDDY COLLEGE OF ENGINEERING

(AUTONOMOUS)

Accredited by NAAC & NBA (CSE, IT, ECE, EEE & ME)

Approved by AICTE, New Delhi and Affiliated to JNTUK, Kakinada

L.B.Reddy Nagar, Mylavaram-521230, Krishna Dist, Andhra Pradesh, India

## DEPARTMENT OF CIVIL ENGINEERING

### REPORT ON

### ONLINE WEBINAR ON

### “GIS & IOT BASED SOLUTIONS FOR INTEGRATED SOLID WASTE MANAGEMENT”

Event Type	Webinar
Date / Duration	14-02-2021
Resource Team	Dr K.B. Chari, Scientist, GIS Labs, Hyderabad
Name of Coordinator	P. Mohana Gangaraju, Asst Professor
Target Audience	Faculty members of Civil, Research scholars, M.Tech and B.Tech students
Total no of Participants	117 (Internal - 11, External – 106)
Objective of the event	<ul style="list-style-type: none"><li>To understand the process of tracking, collecting, and managing solid waste.</li><li>To apply the IoT and GIS technologies to automate and make the process more efficient.</li></ul>
Outcome of event	This webinar would enable participants to understand and appreciate the role of IoT and GIS in effective solid waste management system.
Feedback / Suggestions	Participants gave positive feedback on the webinar and requested to conduct more webinars and FDPs.

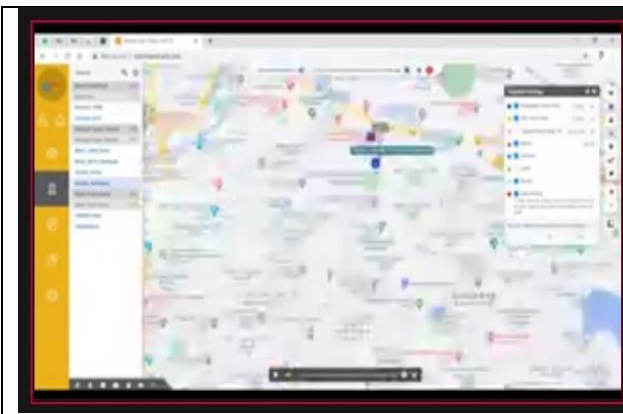
Photographs :



HOD Dr. V. Ramakrishna addressing event



Resource person Dr K. B. Chari, delivering the Lecture.



Presentation of Resource Person



Presentation of Resource Person



Presentation of Resource Person



Presentation of Resource Person

Press Clippings: Nil

## REPORT

A one-day webinar on “GIS & IOT Based Solutions For Integrated Solid Waste Management” is organized in Civil Engineering Department on 14-02-2021 with Dr K.B. Chari, Scientist, GIS Labs, Hyderabad acting as Resource Person.

Solid waste management is a global problem. Collection, transporting, and tracking the process are the major bottlenecks in the Integrated solid waste management. Manual involvement may lead to few cases of mismanagement and manipulation of the activities. Application of IOT systems in handling such issues will solve the problem to a great extent.

The application of IOT is currently widely adopted across the globe at various proportions. Door to door collection, collection from residential areas, collection from municipal dust bins, emptying of the dust bins, transportation from source to transfer/recovery/disposal options are the major options applied in the system. The webinar focussed on addressing the above options using GIS/IOT applications. A case study of solid waste management system in Pune is considered and dealt in detail.

The session is interactive and engrossed the participants. At the end, the participants acknowledged the contribution and desired more programmes of such nature.