



LAKIREDDY BALI REDDY COLLEGE OF ENGINEERING (Autonomous)

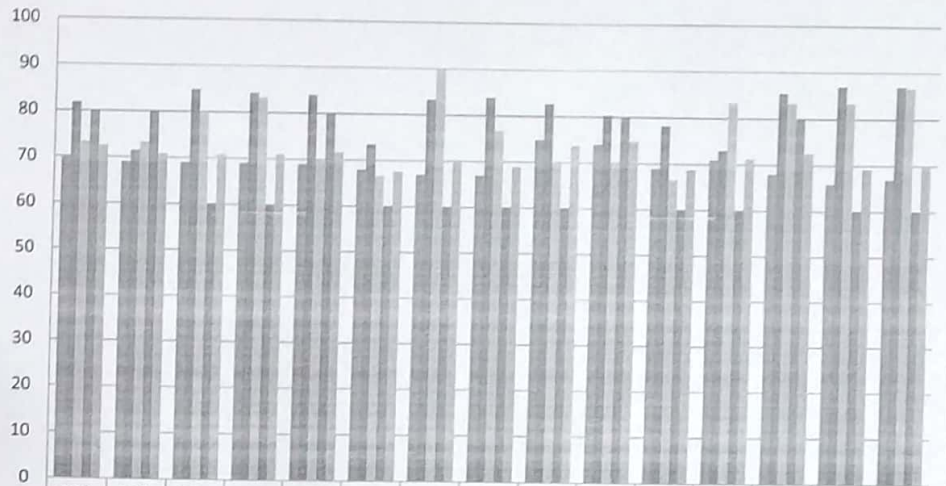
L.B. Reddy Nagar, Mylavaram-521230. A.P, INDIA

Affiliated to JNTUK, Kakinada & Approved by AICTE New Delhi
NAAC Accredited with "A" grade, New Delhi & Certified by ISO 9001:2015

DEPARTMENT OF CIVIL ENGINEERING

<http://www.lbrce.ac.in>, hodcivil@lbrce.ac.in Ph: 08659-222933, Fax: 08659-222931

PO AND PSO ATTAINMENT LEVELS OF 2014-18 BATCH



	PO1	PO2	PO3	PO4	PO5	PO6	PO7	PO8	PO9	PO10	PO11	PO12	PSO1	PSO2	PSO3
■ DIRECT ATTAINMENT OF PO's AND PSO's	70	69	69	69	69	68	67	67	75	74	69	71	68	66	67
■ STUDENT EXIT SURVEY	81.82	71.52	84.85	84.24	83.94	73.39	83.33	83.94	82.7	80.3	78.2	73	85.45	86.97	86.97
■ STUDENT PORT POLIO SURVEY	73.33	73.33	80	83.33	70	66.67	90	76.67	70	70	66.67	83.33	83.33	83.33	86.67
■ EMPLOYER SURVEY	80	80	60	60	80	60	60	60	60	80	60	60	80	60	60
■ FINAL ATTAINMENT(70%Of direct and 30%of indirect	72.515	70.785	70.785	71.057	71.694	67.606	70.233	68.961	73.77	74.83	68.787	71.333	72.478	69.23	70.264

B.N. Rao
CO-ORDINATOR

[Signature]
HOD



ACTION TAKEN REPORT ON ATTAINMENT OF POS/ PSO'S

2014-2018 ADMITTED BATCH

	TARGET	ATTAINED	REMARKS
PO1	60	72.6	<p>Target reached Out of 68 courses, only 56 courses are contributing to this PO1. Out of 56, 46 courses are above PO attainment value of 60%. Action 1: It is instructed to the concerned faculty members that the target not reached courses have a look to improve the program outcomes by changing the delivery methods and content presentations. Action 2: Knowledge of mathematics in application of civil subjects are to be improved by giving more assignments.</p>
PO2	60	71.8	<p>Target reached Out of 68 courses, only 54 courses are contributing to this PO2. Out of 54, 47 courses are above PO attainment value of 60%. Action 1: It is instructed to the concerned course and module coordinators that the target not reached courses have to look to improve the program outcome by changing the different pedagogical methods. Action 2: Formulation of problems and its analysis should be done in the class by making discussion with students.</p>
PO3	60	70.8	<p>Target reached Out of 68 courses, only 29 courses are contributing to this PO3. Out of 29, 25 courses are above PO attainment value of 60%. Action 1: It is instructed to the concerned faculty members that the target not reached courses have once again to take a look to improve the program outcome. Action 2: Change the teaching methodology such that higher cognitive level problems especially design orientation courses are to be discussed in the class rooms.</p>
PO4	60	71.1	<p>Target reached Out of 68 courses, only 37 courses are contributing to this PO4. Out of 37, 34 courses are above PO attainment value of 60%. Action 1: It is instructed to the concerned course and module coordinators that the target not reached courses have to think for improvement of conduct and investigations of problems especially in Geotechnical engineering. Action 2: Special care has to be taken to improve the analysis and investigation of problems.</p>
PO5	60	71.7	<p>Target reached Out of 68 courses, only 35 courses are contributing to this PO5. Out of 35, 31 courses are above PO attainment value of 60%. Action 1: It is instructed to the concerned course and module coordinators that the target not reached courses have to think for improvement of conduct and investigations of problems especially in Transportation engineering and Geotechnical engineering. Action 2: Some video lectures are to be given based on the criticality of the course.</p>
PO6	60	67.7	<p>Target reached Out of 68 courses, only 27 courses are contributing to this PO6. Out of 27, 21 courses are above PO attainment value of 60%. Action 1: Motivate the students to actively participate in social services and the interaction between industry and society.</p>
PO7	60	70.3	<p>Target reached Out of 68 courses, only 38 courses are contributing to this PO7. Out of 38, 30 courses are above PO attainment value of 60%. Action 1: It is instructed to the concerned course and module coordinators that the target not reached courses have to think for</p>

**LAKIREDDY BALIREDDY COLLEGE OF ENGINEERING (Autonomous)**

L.B. Reddy Nagar, Mylavaram-521230, A.P, INDIA

Affiliated to JNTUK, Kakinada & Approved by AICTE New Delhi
NAAC Accredited with "A" grade, New Delhi & Certified by ISO 9001:2015**DEPARTMENT OF CIVIL ENGINEERING**<http://www.lbrce.ac.in>, hodcivil@lbrce.ac.in Ph: 08659-222933, Fax: 08659-222931

			improvement of PO attainment.
PO8	60	69	Target reached Out of 68 courses, only 27 courses are contributing to this PO8. Out of 27, 21 courses are above PO attainment value of 60%. Action 1: While solving the engineering practice oriented problems graduates have to follow the code of ethics.
PO9	60	73.8	Target reached Out of 68 courses, only 20 courses are contributing to this PO9. Out of 20, 17 courses are above PO attainment value of 60%. Action: Increasing emphasis on seminars/ group discussions and to carry out the lab experiments individually or in some cases as team members.
PO10	60	74.9	Target reached Out of 68 courses, only 21 courses are contributing to this PO10. Out of 21, 19 courses are above PO attainment value of 60%. Action: Change the delivery content like involving the more students in interaction to improve the communication skill of the students
PO11	60	68.8	Target reached Out of 68 courses, only 28 courses are contributing to this PO11. Out of 28, 24 courses are above PO attainment value of 60%. Action 1: Impart the knowledge and understanding of the engineering and management principles to work out projects on multidisciplinary environments. Action 2: Select internship activities based on to work, as a member and leader in a team.
PO12	60	71.4	Target reached Out of 68 courses, only 39 courses are contributing to this PO12. Out of 39, 34 courses are above PO attainment value of 60%. Action 1: Encourage/Motivate the students about the importance of engineering courses importance in higher studies Action 2: Inculcate the students to develop the habit of self preparation and life is nothing but learning new information.
PSO1	60	72.5	Target reached Out of 68 courses, only 50 courses are contributing to this PSO1. Out of 50, 42 courses are above PO attainment value of 60%. Action 1: It is instructed to the concerned course and module coordinators that the target not reached courses have to think for improvement of PO attainment. Action 2: Special care has to be taken to improve the analysis and investigation of problems.
PSO2	60	69.3	Target reached Out of 68 courses, only 51 courses are contributing to this PSO2. Out of 51, 40 courses are above PO attainment value of 60%. Action 1: It is instructed to the concerned faculty members that the target not reached courses have a look to improve the program outcomes by changing the delivery methods and content presentations.
PSO3	60	70.3	Target reached Out of 68 courses, only 42 courses are contributing to this PSO3. Out of 42, 33 courses are above PO attainment value of 60%. Action 1: Encourage/Motivate the students about the importance of engineering courses importance in higher studies Action 2: Inculcate the students to develop the habit of self preparation and life is nothing but learning new information. Action 3: Periodic reading is required in engineering courses

B. N. Rao
CO-ORDINATOR

B. N. Rao
HOD